



Recovery and Resilience

at Seacliff and New Brighton State Beaches

About the Project

Seacliff and New Brighton State Beaches, along with other coastal parks, are increasingly impacted by hazards such as large surf, flooding during storms, and erosion of beaches and cliffs. As sea levels continue to rise over the coming decades, the effects of these hazards are predicted to intensify. Improving the resilience of our coastline starts with studying coastal processes, planning for change, and adapting to the new conditions.

The Recovery and Resilience at Seacliff and New Brighton State Beaches study will focus on understanding coastal hazards at Seacliff and New Brighton State Beaches. Based on these results, actions will be identified across various time frames to increase resilience.

Parks Assets

These park features and amenities at Seacliff and New Brighton State Beaches were evaluated for potential vulnerabilities to coastal processes and future sea level rise:



Public Access

Roads, parking, trails, stairways, ramps



Recreation

Campgrounds, ramadas, picnic areas, fire pits, BBQs



Parks Facilities & Infrastructure

Buildings, utilities, shoreline protective structures



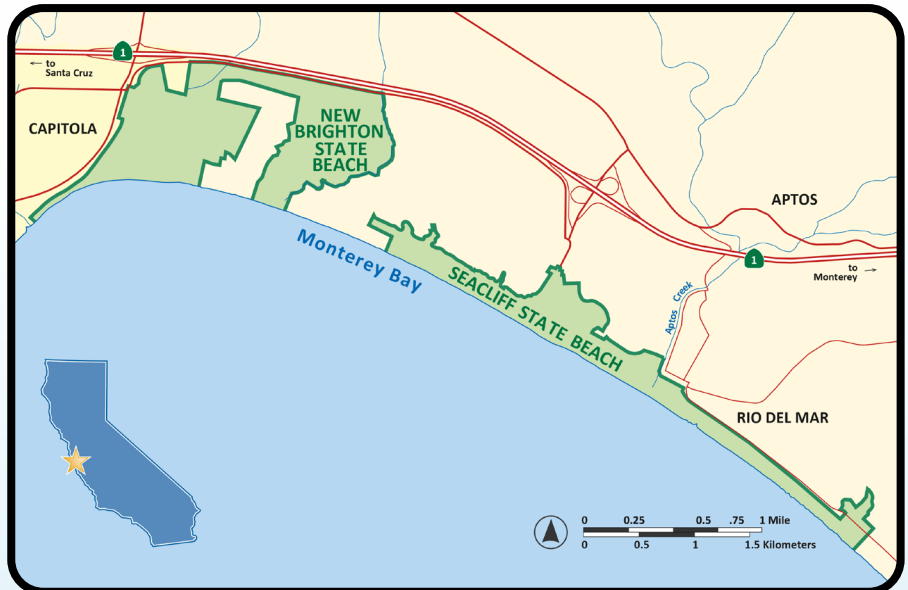
Natural Resources

Land cover, native and endangered species



Cultural Resources

Indigenous archaeological resources, historic features



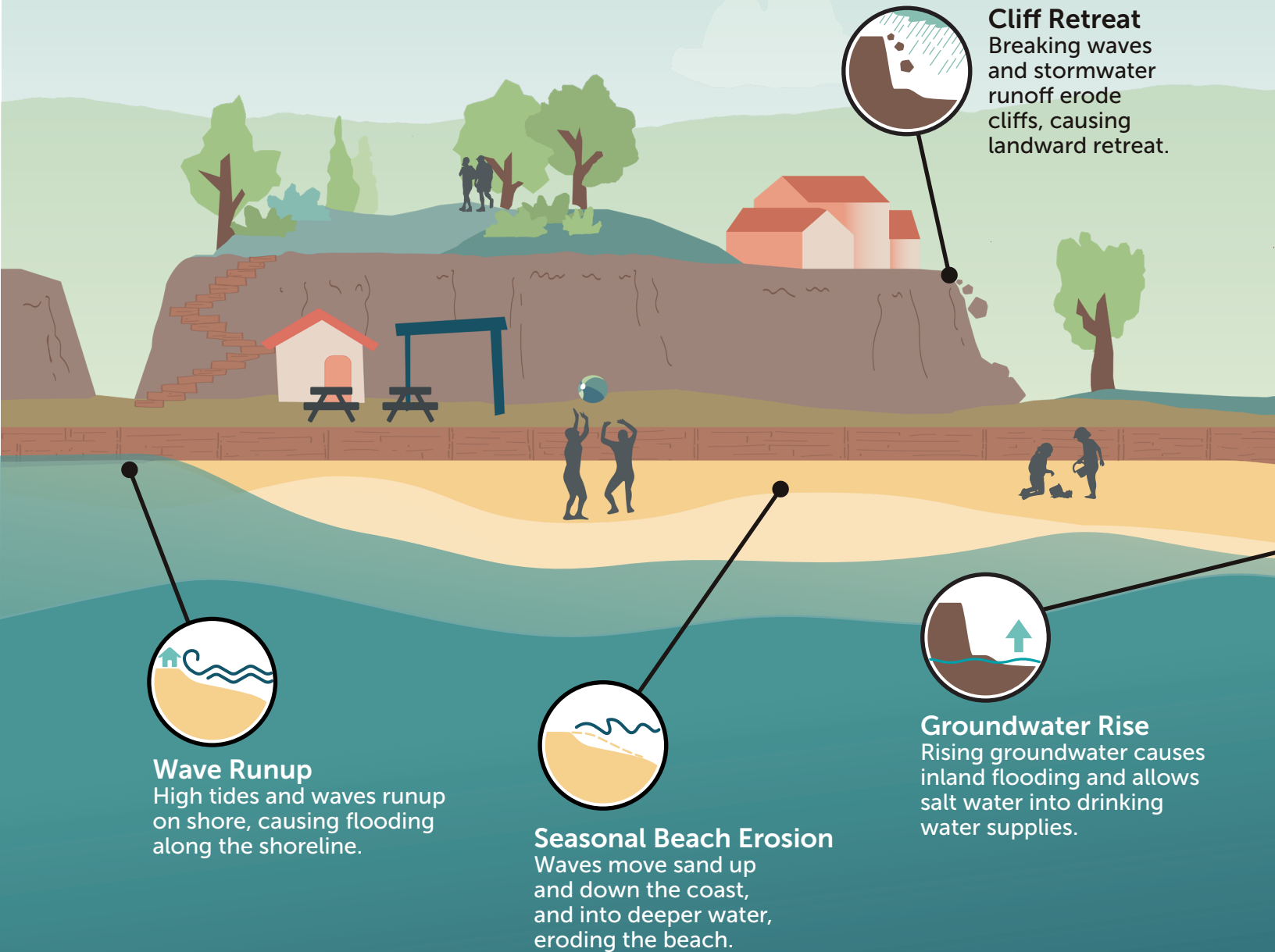
Summary of Project Goals

This study will identify pathways to increase resilience and reduce vulnerability to sea level rise at Seacliff and New Brighton State Beaches by:

- Understanding existing conditions and coastal processes.
- Assessing the vulnerability of the park features and amenities to future sea level rise.
- Identifying shoreline adaptation alternatives.
- Asking the public for feedback.

Coastal Processes and Vulnerabilities

Coastal Processes such as wave runup, beach erosion, and shoreline retreat shape our beautiful coast lines. As sea level rises, park assets that are vulnerable will experience greater and greater impacts.



Cliff Retreat
Breaking waves and stormwater runoff erode cliffs, causing landward retreat.



Wave Runup
High tides and waves runup on shore, causing flooding along the shoreline.



Seasonal Beach Erosion
Waves move sand up and down the coast, and into deeper water, eroding the beach.



Groundwater Rise
Rising groundwater causes inland flooding and allows salt water into drinking water supplies.

Coastal Hazard

When a coastal process has the potential to impact and damage infrastructure and other assets

Vulnerability

How much people, natural, or built systems are likely to be affected by sea level rise.

Impact

How much State Parks assets are affected by a hazard. Impacts are rated from low to severe, which is determined by how much an asset is damaged following exposure to a hazard.

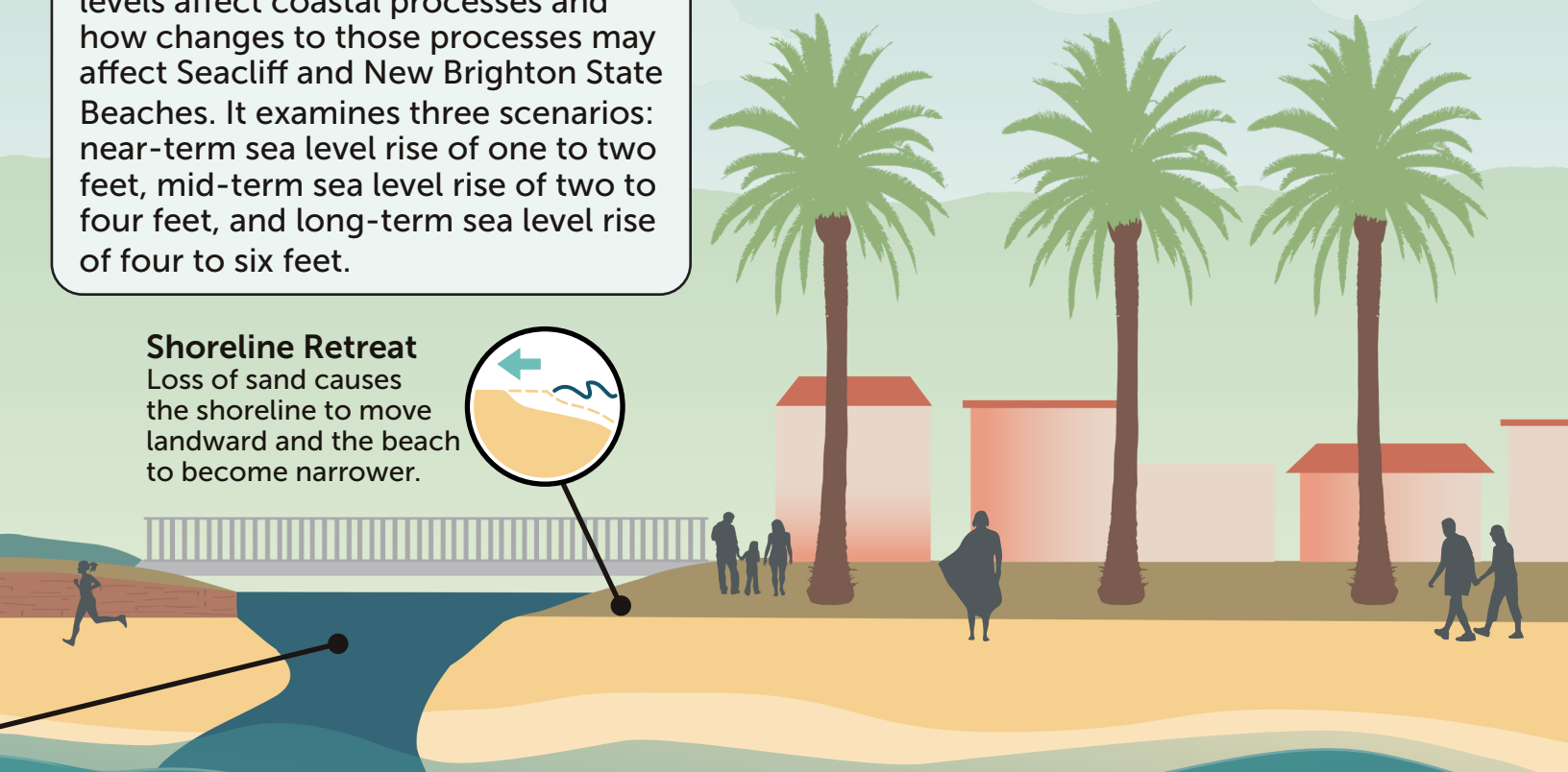
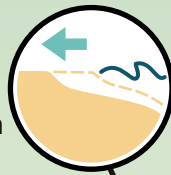


Sea Level Rise Vulnerability Assessment

The Sea Level Rise Vulnerability Assessment studies how rising ocean levels affect coastal processes and how changes to those processes may affect Seacliff and New Brighton State Beaches. It examines three scenarios: near-term sea level rise of one to two feet, mid-term sea level rise of two to four feet, and long-term sea level rise of four to six feet.

Shoreline Retreat

Loss of sand causes the shoreline to move landward and the beach to become narrower.

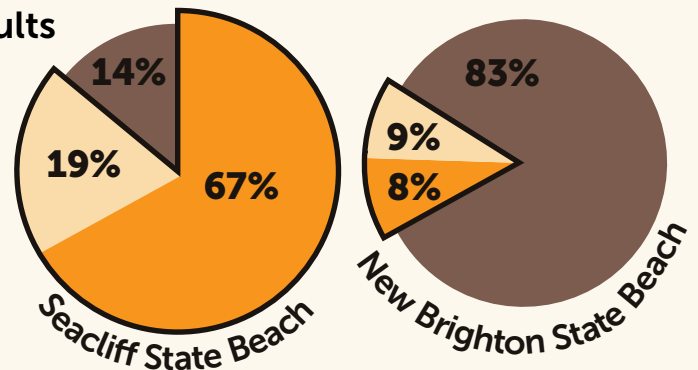


Sea Level Rise Vulnerability Assessment Results

Assets Exposed to Coastal Hazards

- Located on the beach and exposed to coastal hazards
- Located near cliff edge and exposed to cliff retreat
- Located inland and not exposed to coastal hazards

*Outlined portions of chart are exposed to coastal hazards



Potential Impact Level to Assets Exposed to Coastal Hazards

- Park Facilities & Infrastructure
- Recreation
- Public Access
- Natural Resources
- Cultural Resources

	Seacliff Sea Level Rise (feet)			
	1'	2'	4'	6'
Park Facilities & Infrastructure	Low	Moderate	High	Severe
Recreation	Low	Moderate	High	Severe
Public Access	Low	Moderate	High	Severe
Natural Resources	Low	Low	Moderate	High
Cultural Resources	Low	Low	Moderate	High

	New Brighton Sea Level Rise (feet)			
	1'	2'	4'	6'
Park Facilities & Infrastructure	Low	Moderate	High	Severe
Recreation	Moderate	High	High	Severe
Public Access	Moderate	High	High	Severe
Natural Resources	Low	Low	Moderate	High
Cultural Resources	None	None	None	None

- Impact Level
- Low
 - Moderate
 - High
 - Severe
 - None



Project Timeline

What We've Done

Coastal Processes and Sea Level Rise Vulnerability Assessment

ENGAGEMENT OPPORTUNITIES

- Online Survey
- Resources and information in the park or at events

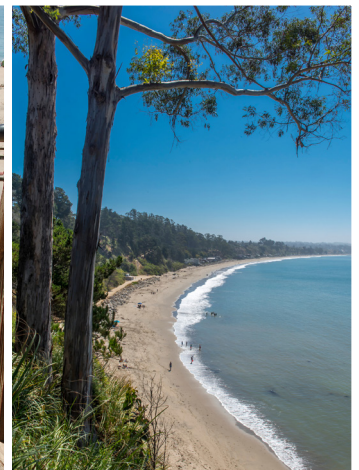
What We're Working On

Alternatives Analysis and Adaption Pathways

ENGAGEMENT OPPORTUNITIES

- Project Open House and Webinar
- Online Survey
- Resources and information in the park or at events

Scan the QR code to visit our website to learn more and join our mailing list!



Questions or comments?

Email us at Seacliff.Resilience@parks.ca.gov
or visit SeacliffResilience.org for more information!

